

ELECTRIC GARLIC CHOPPER



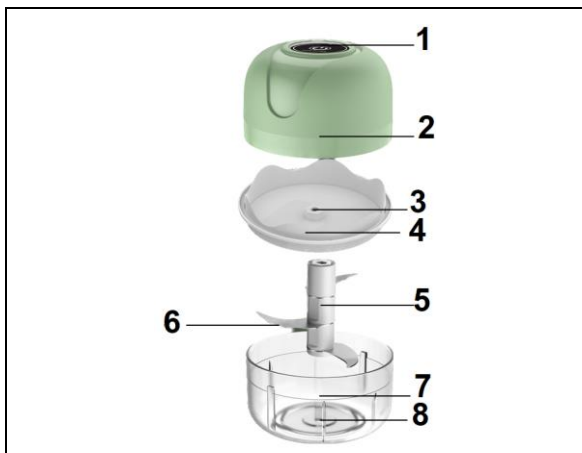
INSTRUCTIONS MANUAL

PLEASE READ THE MANUAL BEFORE YOUR FIRST USE. KEEP THIS MANUAL SAFE FOR FUTURE REFERENCE!

SAFETY PRECAUTIONS

1. Do not use the appliance for other than intended use. It is intended for domestic use only.
2. This item is not intended for use by persons (including children) with reduced physical, sensory or mental capacities, or by persons lacking in experience or knowledge, unless they are supervised or instructed on the use of this item by a person responsible for their safety. Children should be supervised to ensure they do not play with this appliance. Keep out of the reach of children.
3. Do not use the appliance if it does not operate correctly during operation, or if the USB cord or USB charger (not included) is damaged.
4. Never use the appliance with wet hands or on a damp or wet surface.
5. Do not let the USB cord hang over the edge of a table or counter, or touch hot surfaces.
6. Do not use the appliance if it has fallen on the floor or there are faults during operation.
7. Never attempt to dismantle or repair the appliance yourself. Take your appliance to an approved service center. **All repairs should be done by a qualified technician.**
8. Keep it away from heat sources, direct sunlight, humidity, water, or other liquids.
9. Do not subject it to strong impacts and do not throw it.
10. Do not drop, short-circuit, modify, disassemble or puncture it.
11. Handle the product with care. A blow, a shock, or a fall, even from a low height, can damage it.

PRODUCT DESCRIPTION



1. ON/ OFF switch
2. Cover containing the engine block
3. Tip of interlayer cover
4. Interlayer cover
5. Cutting shaft
6. Blade
7. Bowl
8. Rod to insert the cutting shaft

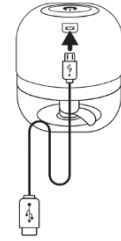
The chopper can also chop the celery, the mushroom, the pumpkin, boiled potatoes to mash them, to mince meat, etc. Make sure to cut the ingredients into small pieces beforehand.

TECHNICAL SPECIFICATIONS – CARACTÉRISTIQUES TECHNIQUES -

Rated power	23W
Rated input voltage	5V
Rated input current	1 A
Working time	≤ 30

CHARGING OPERATION -

Charging time	Around 2 hours
Working time for a full charge	Around 3 hours



- Before first use, fully charge the chopper. When charging, the red light is on. After fully charged, the light goes off.
- Make sure to charge it if you haven't used it for a long time. Charge it once within 3 months.

OPERATION

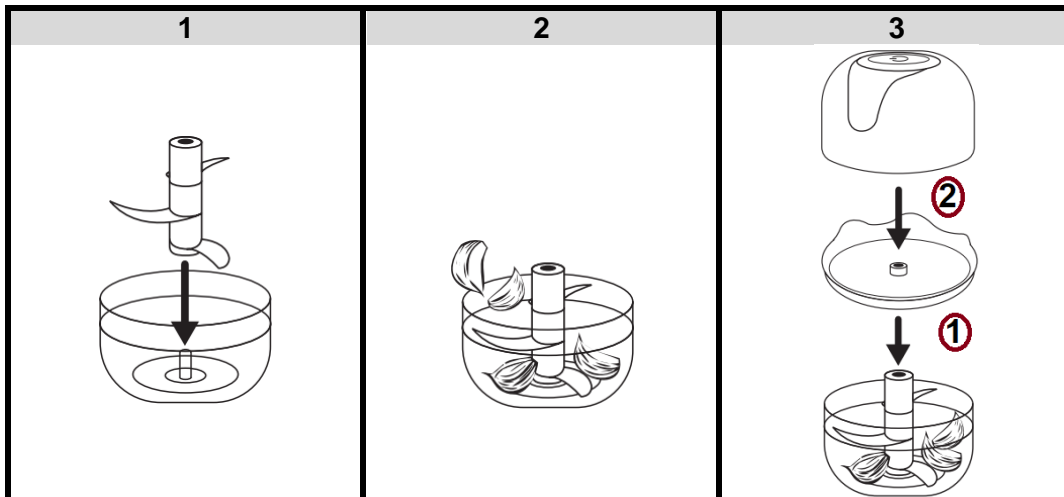


- Carefully handle the cutting shaft, when handling or cleaning it, as the blades are very sharp. Never test the edge of the blade by running your finger over it.
- Only use the chopper on a stable worktop surface.
- Insert the cutting shaft into the bowl before adding the ingredients. Make sure not to overfill the bowl. If there is too much food, the blade could be stuck and not operate properly. Take out some food for proper operation of the unit.
- Do not run it empty.
- Do not remove the engine block cover before the blade stop operating.

Before first use:

- Wash all accessories in contact with food using water with a little washing up liquid. After rinsing, wipe them all dry. Do not wash the cover containing the engine block.
- Bowl capacity : 100 ml

Assembling the product



Operation

1. After assembling the elements of the chopper as described below, cutting the ingredients into small pieces and putting them into the bowl, press and hold on the switch to turn on.
2. Release the button after 30 seconds of operation.

Important note: The working time cannot exceed 30 seconds. After operation of 30 seconds, release the button, wait a few minutes and then press and hold the button for 30 seconds maximum. Renew this operation strictly another time. After 3 consecutive cycles, let the unit

cool during 30 minutes to guarantee its lifetime. Then renew the operation if your chopping results is not reached.

CLEANING AND MAINTENANCE



- **Be careful, the blades are very sharp; carefully remove and clean the cutting shaft.**
- **Never use abrasive agents or other utensils with a rough surface.**
- **LET IT COOL OFF BEFORE CLEANING if you have used it.**
- Do not clean when charging or when the USB cable is plugged. Unplug it first and let it cool down.
- **DO NOT immerse the cover containing the motor bloc in water or other liquids.** Only clean with a dry cloth or slighty damp cloth if it is dirty, then wipe dry.
- The unit and its elements are not dishwasher safe.

- Wash the bowl, blade and lid with warm water and washing up liquid immediately after use. Carefully wipe dry the blade and the elements and reassemble it./ Lavez le bol, couteau et couvercle avec de l'eau et du liquide vaisselle.

Note: The bowl may eventually take on a dull appearance if abrasive food is mixed inside it.

- Always store the chopper in a safe place out of the reach of children.
- Store the sharpener in a dry and ventilated place, away from high temperatures.

USEFUL TIPS

- Do not grind hard ingredients such as nuts, beans, coffee, ice cream, or frozen foods.
- Use a wooden spoon to mix the ingredients in the bowl.
- Remove materials that can block the blade.
- Do not run the chopper empty.
- To obtain a homogeneous result, fill the bowl with pieces of food of the same size.



WARNING: You should not dispose of this device with your household waste. A selective collection system for this type of product is implemented by your local authorities. Please contact your local authorities to find out how and where collection takes place. These restrictions apply because electrical and electronic devices contain dangerous substances that have harmful effects on the environment or on human health and must be recycled.

This symbol indicates that electrical and electronic devices are collected selectively. The symbol shows a waste container crossed out with an X symbol.

If the power cable is damaged, it must be replaced by the manufacturer, his after sales service, or a person qualified in this area in order to avoid any accidents arising.



Imported by EML – trading name Prodis 1, rue de Rome 93110 Rosny-sous-Bois-France/ Made in PRC

Marketed by EUROTOPS VERSAND GMBH D-40764 LANGENFELD

